



## MISSION TRAILS LITTLE LEAGUE

# DOCUMENT DROP-OFF CHECKLIST

### REQUIRED DOCUMENTS

**Birth Certificate of Player**

*Birth certificates only need to be viewed once by a MTLL representative. Check your player's account to see if we have already viewed their birth certificate: log into your account, click "Members", and then click your player's name; if the "Birth Certificate" check box is checked, then you don't need to bring the birth certificate again.*

**MTLL Eligibility Documentation**

*You must provide proof that your child is eligible to play in MTLL, and the type of documentation that you need to provide depends on where your child lives and/or attends school. Please use the flow chart on the following page to determine which documentation you must provide.*

**Medical Release Form ([download here](#))**

- Signed by parent or court-appointed guardian

**Concussion Information Sheet ([download here](#))**

- Signed by parent or court-appointed guardian
- Signed by player

**Parent Code of Conduct Form ([download here](#))**

- Signed by parent or court-appointed guardian

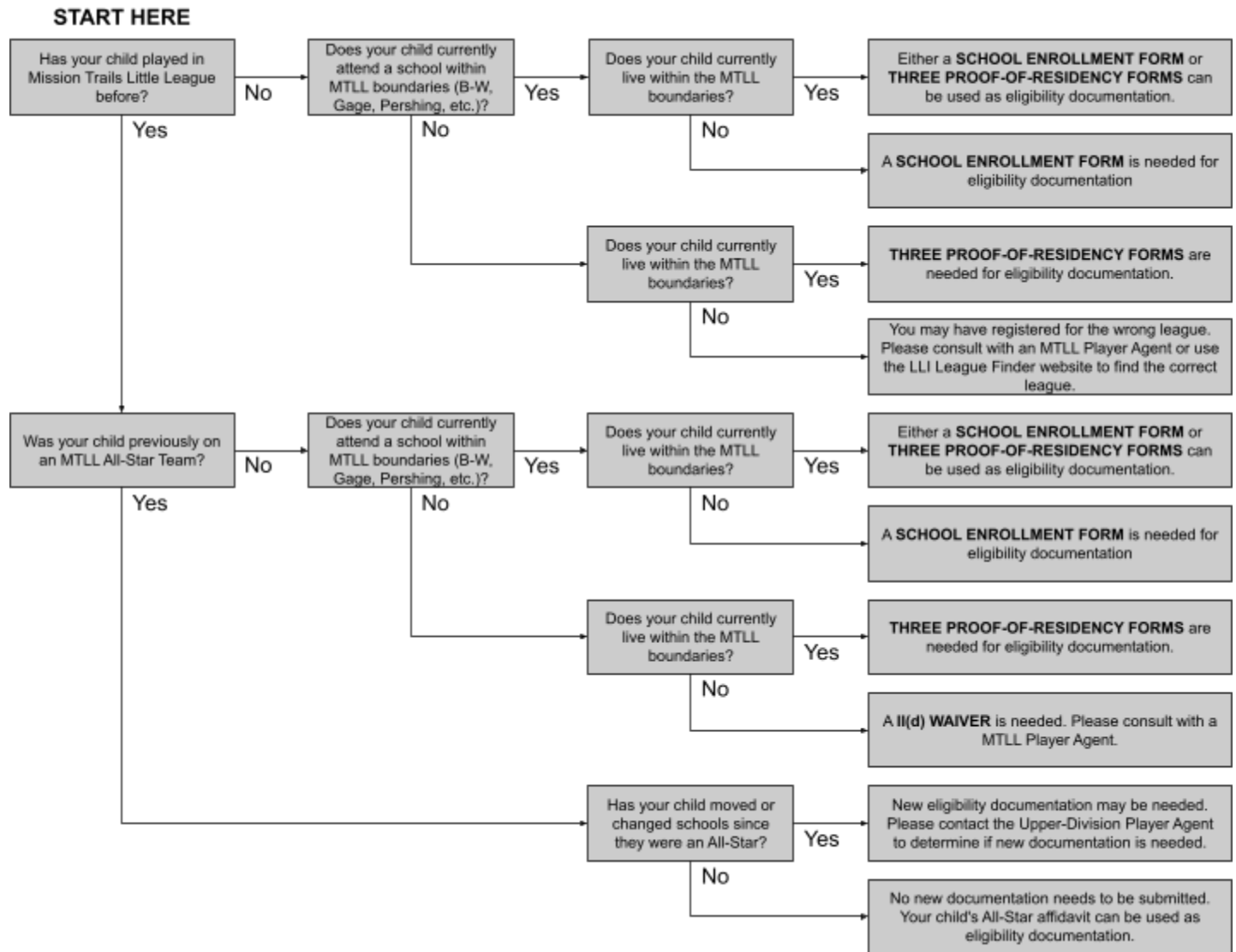
**Sudden Cardiac Awareness Form ([download here](#))**

- Signed by parent or court-appointed guardian

**\$150 Check for Snack Bar Deposit (one per family)**

*Checks only please. The check will be returned uncashed upon completion of a volunteer shift in the snack bar, after volunteering to umpire one game, or after you have been approved as a manager.*

# MTLL ELIGIBILITY DOCUMENTATION FLOW CHART



## LINKS

- School Enrollment Form: <https://www.littleleague.org/downloads/school-enrollment-form/>
- Proof-of-Residency Guidelines: <https://www.littleleague.org/downloads/residency-checklist/>
- Little League II(d) Waiver: <https://www.littleleague.org/downloads/regulation-ii-d/>
- Little League League Finder: <https://www.littleleague.org/play-little-league/league-finder/>

## CONTACTS

If you have any questions concerning eligibility documentation, please contact one of the MTLL Player Agents or Division Coordinators.