



Everitt Labradors

Everitt Middle School

3900 Kipling St. Wheat Ridge, CO. 80033

Program Coordinator:

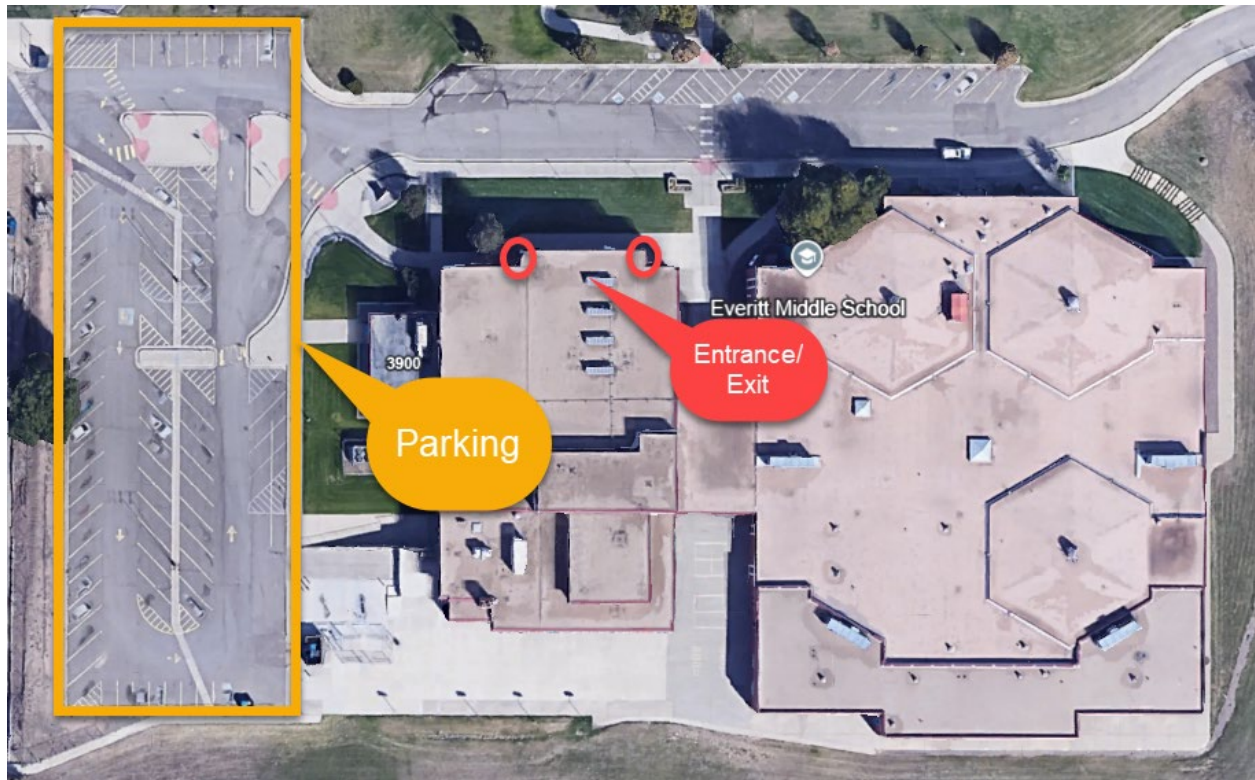
Mackey Power: 720.695.2697 | Mpower@ci.wheatridge.co.us

Release Time:

3:55pm – **DO NOT** arrive before 4:15pm

Entrance/Exit and Parking:

Use the entrance and exit indicated by the red circles on the North side of the building (Gym Doors).



Below are the Expectations and Guidelines for use of the facility as part of the JeffCo Middle School Sports League.

These Expectations and Guidelines apply to ALL TEAMS' players, coaches, parents, spectators, officials, and staff.

****All expectations from the Parent/Player Contract signed at the beginning of the season apply to games. Poor sportsmanship will NOT be tolerated and is grounds for removal from the facility and/or the team being forfeited from the game***

Team Expectations

- All games will be played in accordance with the sport specific rules set by the JeffCo League.
- Teams must bring their own ball(s) for warm up
- All game times are APPROXIMATE. Be prepared to start your game as soon as the previous game is complete.
- Please assist in making game transitions as quick as possible to keep games on schedule.
- Only the clock operator and bookkeepers are allowed at the scorers' table
- No concessions or vending machines will be provided/available. Please bring your own water. Drinking fountains available.
- Teams are expected to clean up their bench area at the completion of each game. Teams are also expected to ensure their fans and spectators clean up their area after each game.
- Players, parents, and spectators are expected to conduct themselves in a manner that is appropriate and reflective of the JeffCo League Middle School Sports Program and its associated Code of Conduct (parent/player contract).

Facility Policies

- No food or drink allowed in the gym. Closed top water bottles are permitted, no sports drinks.
- Players must remain at their benches between quarters and during halftime.
- Locker rooms are available for restroom use only.
- Players are not permitted to wander the halls, hangout in the locker rooms or enter restricted areas. Players need to be supervised by a coach or parent at all times when not participating in a game.
- Visitors must respect and uphold the policies and expectations of each host facility