

The logo is a shield-shaped emblem. At the top is a five-pointed star with a baseball bat and a baseball on either side. Below the star is a banner with the text 'THE CITY OF PROVO'. Underneath the banner is another banner with 'SOFTBALL & BASEBALL' in a stylized font. At the bottom of the shield is a baseball bat and a baseball, with 'R.B.' on the left and 'S.L.' on the right. The entire logo is rendered in a light blue and red color scheme.

**WELCOME TO THE
SPRING 2026
COACHES MEETING**

WHO AM I?

JACK MCLAIN

ATHLETICS AND AQUATICS SUPERVISOR

(972)772-6498

JMCLAIN@ROCKWALL.COM

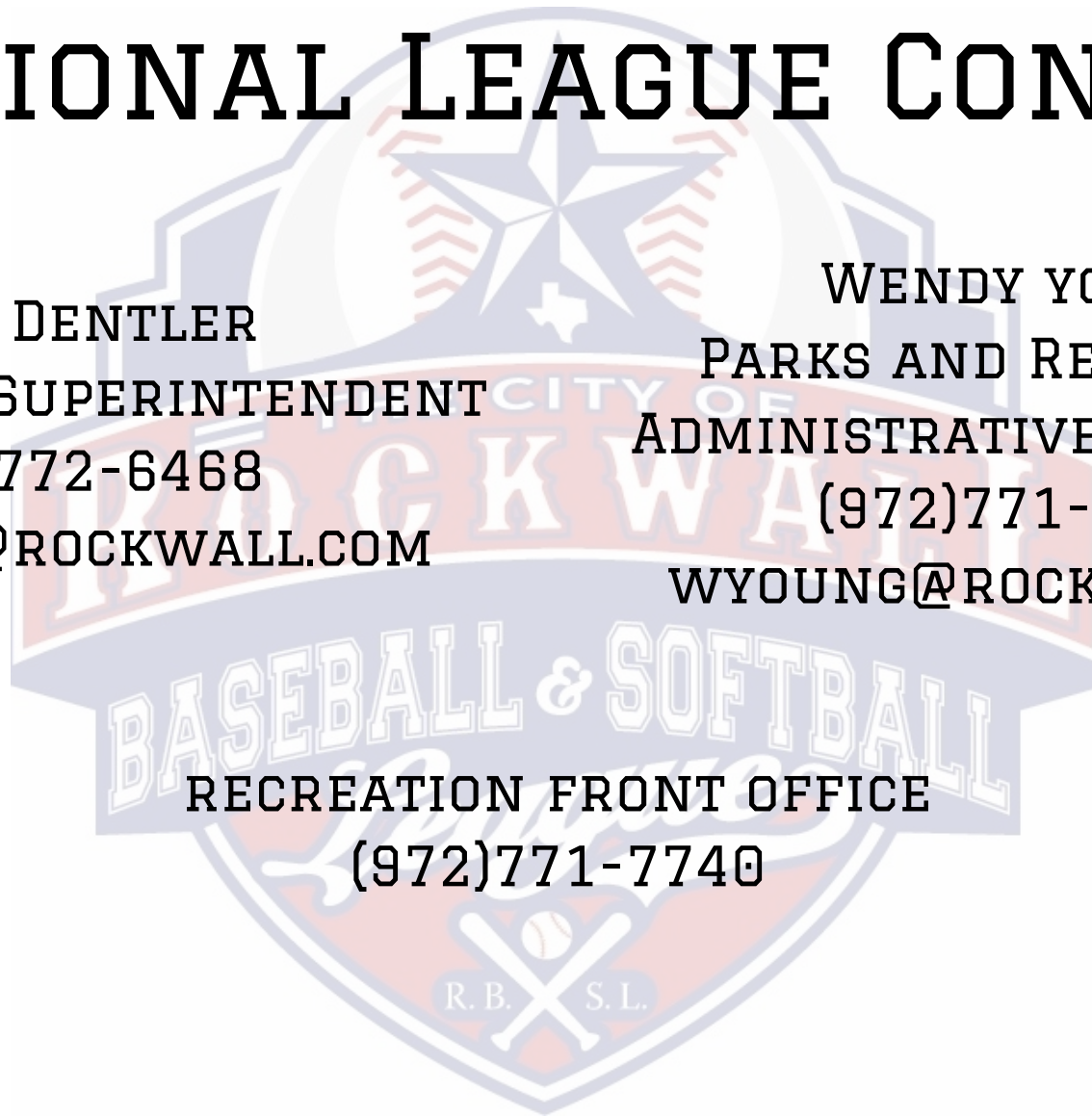


ADDITIONAL LEAGUE CONTACTS

CORY DENTLER
RECREATION SUPERINTENDENT
(972)772-6468
CDENTLER@ROCKWALL.COM

WENDY YOUNG
PARKS AND RECREATION
ADMINISTRATIVE ASSISTANT
(972)771-7761
WYOUNG@ROCKWALL.COM

RECREATION FRONT OFFICE
(972)771-7740



MASS COMMUNICATION INFO

TEAM SIDELINE

WWW.TEAMSIDELINE.COM

MASS TEXT ALERTS-OPT IN

MASS EMAILS-CHECK YOUR SPAM FOLDER

**FACEBOOK-LIKE AND FOLLOW OUR PAGE FOR THE LATEST
UPDATES AND REMINDERS ABOUT THE LEAGUE.**

WWW.FACEBOOK.COM/ROCKWALLPARKSANDRECREATION

FIELD STEWARDS

DO NOT MAKE RULE INTERPRETATIONS

WHAT STEWARDS ARE THERE FOR:

OPENING/LOCKING GATES

RESTROOMS

ENFORCE POLICIES

MOVING BASES

STEWARDS DO NOT MOVE MOUNDS

IF YOU HAVE A QUESTION OR ISSUE:

LOOK FOR STAFF WALKING AROUND

LOOK IN THE RBSL OFFICE AT THE REAR OF THE CONCESSION STAND

COACHES' RESPONSIBILITIES

- ROSTERS-ENSURE ONLINE ROSTER IS CORRECT
 - UNIFORMS-TEAM'S RESPONSIBILITY
 - ALL SPORTS
 - ROCKWALL SPORTS
- PRACTICES-BOOK ONLINE 3 DAYS TO 14 DAYS IN ADVANCE
 - LIT FIELDS-LEON TUTTLE ATHLETIC COMPLEX FIELDS 1 THRU 7
 - NON-LIT FIELDS
 - LEON TUTTLE ATHLETIC COMPLEX FIELDS 8
 - HARRY MYERS FIELDS 1 & 2
 - YELLOWJACKET PARK FIELDS 1 & 2 & 3
 - COUPON CODES-COPIES ON THE TABLE AT THE BACK

COACHES' RESPONSIBILITIES

- PARENTS

- COMMUNICATION-RELAYING MESSAGES TO YOUR TEAM
- ISSUES-EVERY SITUATION IS DIFFERENT AND WILL BE HANDLED DIFFERENTLY
 - CONTACT ME IF YOU NEED ASSISTANCE WITH ISSUES
 - (EMAIL PREFERRED) JMCLAIN@ROCKWALL.COM
 - REPORT ISSUES IN A TIMELY MANNER

- MOST IMPORTANTLY

- STAY POSITIVE
- FOCUS ON PLAYER DEVELOPMENT
- FOCUS ON THE PLAYERS HAVING FUN
- I BELIEVE IT IS JUST AS IMPORTANT TO LEARN TO LOSE AS IT IS TO LEARN TO BE A GRACIOUS WINNER!

ROSTERS

- **COACHES ALREADY HAVE ACCESS TO THEIR ROSTERS**
 - MAKE SURE TO VIEW AND VERIFY
- **ROSTER MOVES DURING THE SEASON WILL HAVE TO BE APPROVED BY THE LEAGUE**
 - THIS INCLUDES INJURED PLAYERS
 - WE DO NOT ALLOW GUEST PLAYERS
- **WE DO NOT PROVIDE TEAM INSURANCE, YOU ARE WELCOME TO PURCHASE TEAM INSURANCE ON YOUR OWN**

ROSTERS

- REGISTERING TO COACH, IN THE DRAFT DIVISION, ONLY SECURES YOU THE OPPORTUNITY AS THE COACH TO HAVE A ROSTER BUILT AROUND YOU.
- PLAYERS HAVE TO GET REGISTERED IN A TIMELY MANNER IN ORDER TO MAKE IT ONTO THEIR PREFERRED TEAM WITH THEIR PREFERRED COACH.
- I WILL ADD AS MANY PLAYERS FROM THE WAITLIST AS POSSIBLE BUT IT MUST BE DONE IN THE ORDER IN WHICH THE PLAYERS WERE ADDED TO THE WAITLIST
- TBALL - 8U BASEBALL -12 PLAYERS/ROSTER
- 8U,10U SOFTBALL -12 PLAYERS/ROSTER
- 9U-13/14 BASEBALL -11 PLAYERS/ROSTER
- 12U/14 SOFTBALL - 11 PLAYERS/ROSTER

PROCEDURES

- EVERY COACH IN THE DUGOUT OR ON THE FIELD IS REQUIRED TO HAVE THEIR CITY ISSUED ID CARD.
- HEAD COACHES IT IS YOUR RESPONSIBILITY TO MAKE SURE THEY ALL HAVE ID CARDS
- BACKGROUND CHECKS ARE REQUIRED TO BE COMPLETED THROUGH THE REGISTRATION PROCESS ON TEAM SIDELINE WEBSITE.
 - PLEASE ASK IF YOU NEED ASSISTANCE
- COACHES-PROVIDE 2 LINEUP CARDS
 - OPPOSING TEAM
 - UMPIRES
- HOME TEAM PROVIDES OFFICIAL SCOREKEEPER - USE GAMECHANGER
- VISITING TEAM PROVIDES SCOREBOARD OPERATOR
 - PICK UP THE SCORE BOARD CONTROLLER FROM STEWARD OFFICE
 - MUST LEAVE ID WITH STEWARD TO TAKE THE CONTROLLER

FIELD RESERVATIONS

GAME SCHEDULES

- COUPON CODES VALID UNTIL DROP DEAD DATE OR END OF SEASON
- FIELD PRIORITY GOES TO THE RBSL TEAMS
- ONCE GAME SCHEDULES HAVE BEEN POSTED THERE WILL BE MINOR ADJUSTMENTS BEFORE THE START OF THE SEASON
 - ONCE THE SEASON HAS BEGUN ANY SCHEDULE ADJUSTMENTS WILL GO THROUGH THE RESCHEDULE PROCESS
- IF YOU NEED TO CANCEL A PRACTICE-EMAIL JMCLAIN@ROCKWALL.COM
- BLACKOUT REQUEST - DEADLINE - FEBRUARY 16
 - ONLY ALLOWING ONE PER WEEK PER TEAM

COUPON CODES

Coupon Codes Spring 2026	
Field Name	Code
Harry Myers field 1	hm1spring
Harry Myers field 2	hm2spring
Leon Tuttle field 1	lt1spring
Leon Tuttle field 2	lt2spring
Leon Tuttle field 3	lt3spring
Leon Tuttle field 4	lt4spring
Leon Tuttle field 5	lt5spring
Leon Tuttle field 6	lt6spring
Leon Tuttle field 7	lt7spring
Leon Tuttle field 8	lt8spring
Yellow Jacket Field 1	yj1spring
Yellow Jacket Field 2	yj2spring
Yellow Jacket Field 3	yj3spring

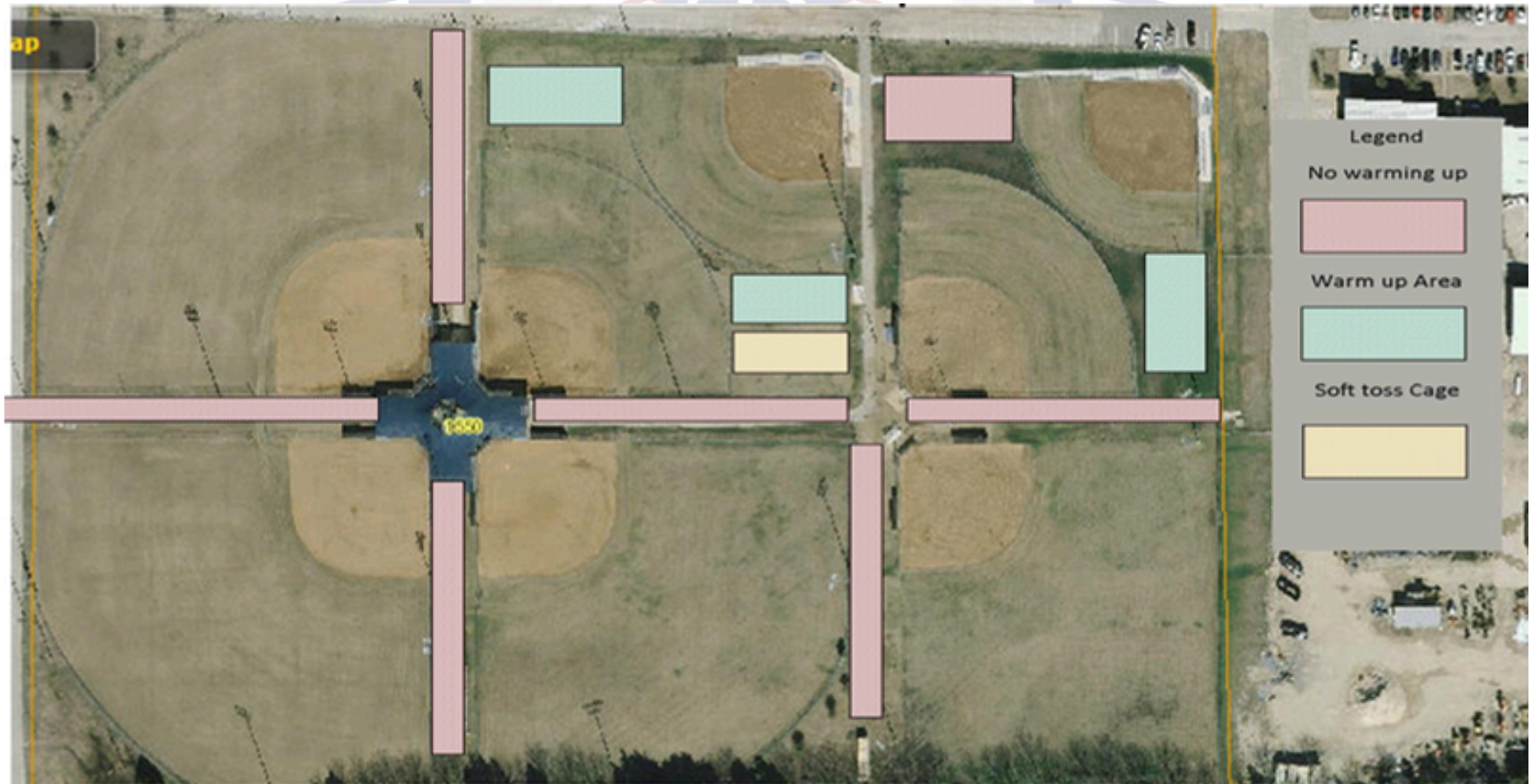
IMPORTANT DATES

- FIRST WEEK OF GAMES - MARCH 9
- SPRING BREAK BYE WEEK MARCH 16-20
- DROP DEAD DATE OF MAY 28
- NO TOURNAMENT
- RINGS GO TO 1ST AND 2ND PLACE IN STANDINGS

FIELD NUMBERS



LEON TUTTLE WARM UP AREAS



FACILITY RULES

- **LEON TUTTLE ATHLETIC COMPLEX FIELDS**
 - AVAILABLE FOR PRACTICES BY RESERVATION ONLY
 - NO EXCEPTIONS
 - ARE NOT FIRST-COME FIRST-SERVE
 - IF YOU ARE CAUGHT ON FIELDS WHEN THE GATES ARE LOCKED PD WILL BE CALLED TO POSSIBLY ISSUE A TRESPASSING WARNING AND YOU WILL NOT BE ALLOWED TO PRACTICE ON OUR FIELDS FOR 30 DAYS.
- **HARRY MYERS AND YELLOWJACKET PARK FIELDS**
 - FIRST COME FIRST SERVE UNLESS PREVIOUSLY RESERVED BY A TEAM
 - IF SOMEONE HAS A RESERVATION AND YOU ARE ON THE FIELD YOU WILL BE REQUIRED TO MOVE OFF THE FIELD.
- **SUNFLOWER SEEDS ARE PROHIBITED**
- **NO HITTING INTO FENCES (SOFT TOSS)**
- **BE NICE TO THE UMPIRES!!!**

FIELD MAINTENANCE

- **HELP TO KEEP THE FIELDS PLAYABLE BY DOING THE FOLLOWING:**
 - **REPORT ANY UNSAFE/PLAYABILITY ISSUE AS SOON AS POSSIBLE**
 - **DO NOT WARM UP ON THE FOUL LINES OR IN THE BATTERS BOX BEFORE GAME TIME**
 - **DO NOT PRACTICE ON INFIELDS WHEN THEY ARE MUDDY**
 - **DO NOT THROW OR HIT BALLS INTO THE FENCE**
 - **ENCOURAGE YOUR PLAYERS TO NOT STAND IN ONE SPOT IN THE FIELD OR DIG HOLES IN THE FIELD WITH THEIR CLEATS**
 - **PLEASE DO CONTINUE TO REMOVE ALL YOUR TRASH FROM THE STANDS AND DUGOUTS AFTER GAMES**
 - **PLEASE PUT "L" SCREENS BACK ON THE OUTSIDE OF THE FENCE WHEN YOU ARE DONE USING IT**
 - **PICK UP ALL BALLS FROM THE FIELD AT THE END OF YOUR PRACTICE**
 - **IF YOU NEED A BASE MOVED, PLEASE ASK THE FIELD STEWARD TO MOVE IT FOR YOU.**
 - **PITCHING MOUNDS WILL NOT BE MOVED FOR A PRACTICE**

RAIN OUT NOTIFICATIONS

- WE HAVE A RAIN OUT NUMBER YOU CAN CALL
 - (972)771-1281
- WE HAVE A RAIN OUT APP THAT YOU CAN CONNECT TO
 - SEARCH APP STORE FOR RAIN OUT LINE APP
 - IN THE APP SEARCH AND SET CITY OF ROCKWALL AS FAVORITE
- WE HAVE A RAIN OUT WEBPAGE
 - VISIT WWW.RAINOUTLINE.COM AND SEARCH FOR CITY OF ROCKWALL
 - SIGN UP FOR TEXT ALERTS AND NOTIFICATIONS
- FIELD CONDITIONS WILL BE UPDATED AT THE FOLLOWING TIMES:
 - MONDAY - FRIDAY 3:00 PM
 - SATURDAY BY 7:30 AM
 - SUNDAY BY 10:00 AM
- USE QR CODE TO ACCESS RAINOUT WEBSITE



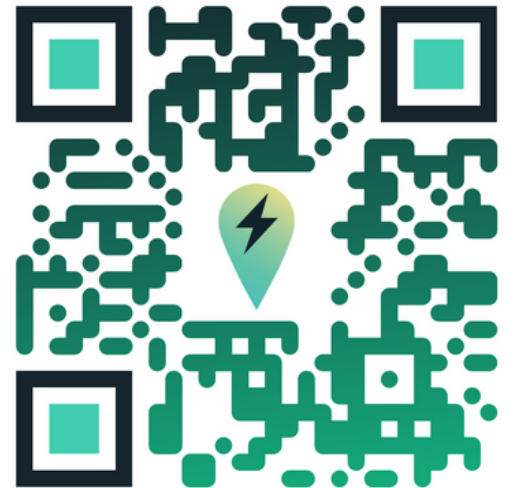
RAIN OUT

FIELD NOTIFICATIONS (AFTER OUR STANDARD FIELD UPDATE)

- EACH STORM IS DIFFERENT AND PRESENTS DIFFERENT CHALLENGES
- WE WILL NOTIFY VIA MASS EMAIL FROM TEAM SIDELINE IF FEASIBLE
- DO NOT CONTACT ME

LIGHTNING PROCEDURES

- THE PERRY WEATHER SYSTEM WILL SOUND A WARNING SIREN
 - FOLLOW THE DIRECTIONS GIVEN BY THE WEATHER SYSTEM
 - CLEAR THE FIELDS IMMEDIATELY(MANDATORY)
 - TAKE COVER IN YOUR CAR UNTIL THE "ALL CLEAR" IS GIVEN
 - "ALL CLEAR" WILL SOUND NO SOONER THAN 30 MINUTES AFTER THE LAST DETECTION OF LIGHTNING PRODUCING CONDITIONS
 - IF THE DELAY LAST LONGER THAN AN HOUR GAMES WILL BE RESCHEDULE
- SCAN THE QR CODE TO ACCESS THE COUNTDOWN TIMER FOR PERRY WEATHER



LIGHTNING PROCEDURES

- **TORNADO WARNING VS. WATCH**
 - IF A TORNADO WARNING IS IN EFFECT PRIOR TO THE FIRST GAME NO GAMES WILL BE ALLOWED TO COMMENCE UNTIL THE WARNING IS LIFTED.
 - IF A WATCH IS IN EFFECT BEFORE A GAME WE WILL CLOSELY MONITOR THE SITUATION AND NOTIFY PARTICIPANTS IMMEDIATELY OF ANY CHANGES.
- IF A GAME IS CANCELLED PRIOR TO THE COMPLETION OF THE 3RD INNING BECAUSE OF WEATHER, THE GAME WILL BE RESCHEDULED AND PLAYED FROM THE BEGINNING AT A LATER DATE.

BLACKOUT REQUEST FORM

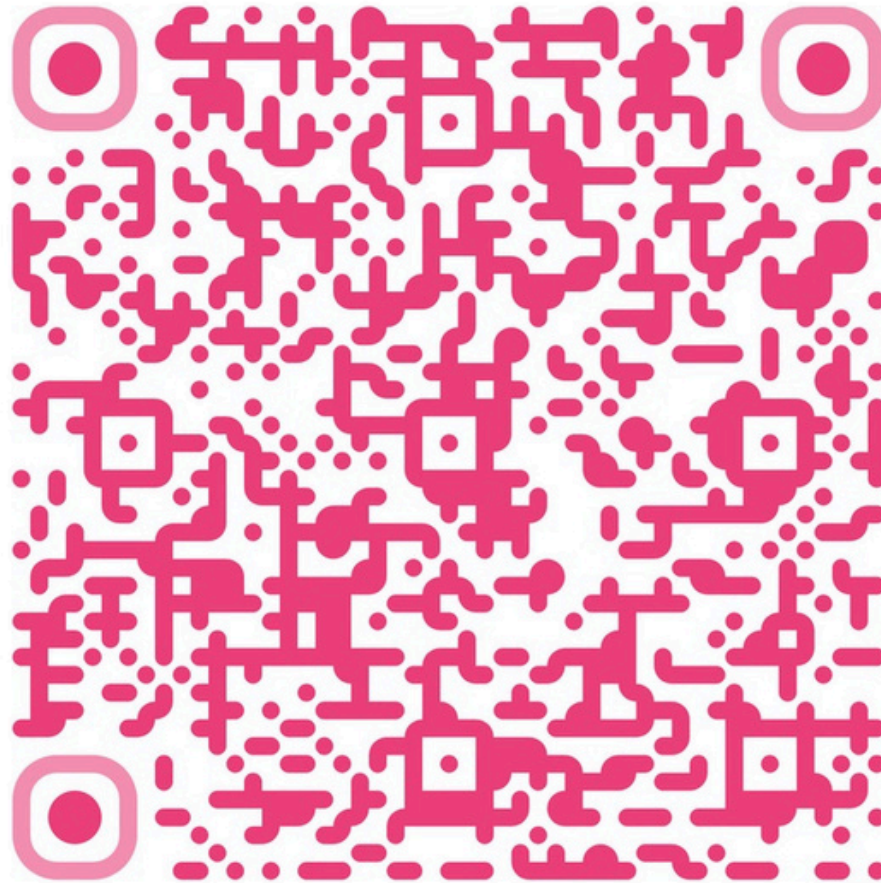


**BLACKOUT
REQUEST
DEADLINE
FEBRUARY 16**

RBSL UMPIRE ZERO TOLERANCE POLICY



RBSL SOFTBALL RULES



RBSL TBALL/BASEBALL UPDATED RULES



GAME RESCHEDULE PROCESS



HOW TO RESERVE A FIELD!



Sports Field Management

Update from the Director

- **10 tons Duraedge Proslide Expanded Shale**
 - **Manages moisture**
 - **From excess to what it is designed to hold**
 - **Provide cleat in - cleat out results**
- **10 tons Duraedge Playball Calcined Clay**
 - **Manages moisture**
 - **Decrease dry times**
 - **Provides smooth consistent ball play**
- **10 tons Duraedge Classic infield clay**
 - **72% sand**
 - **12% silt**
 - **16% clay**
 - **Provides a firm, quick drying playing surface**

Sports Field Management

Update from the Director

- Foul poles painted
 - Dayglo paint
 - Hi visibility for umpires
- Player benches painted
- Infields leveled
- New Base anchor ropes
- Bases refurbished or replaced
- 4 new pitching mounds